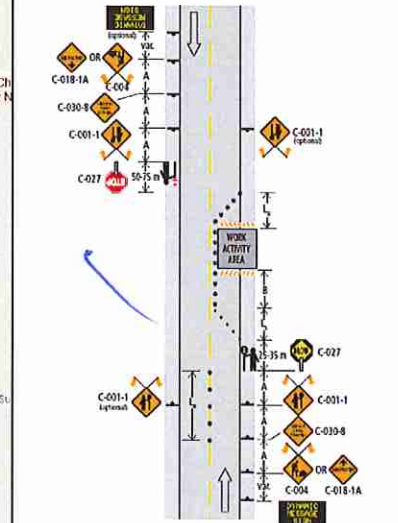




**WORK FROM POLE 1 TO POLE 57
WILL FOLLOW TRAFFIC FIGURE 7.8
SINGLE LANE ALTERNATING**

Figure 7.8: Lane Closure with TCPs – Single Lane Alternating – Short and Long Duration



Regulatory Speed Limit	50 km/h	60 km/h	70 km/h	80 km/h	90-100 km/h
1a Taper Length For Lane Closure	35 (1:10)	55 (1:15)	75 (1:20)	90 (1:25)	110 (1:30)
1b Taper Length For Shoulder Work on Where TCPs Used (Min. 3 Cones)	5	8	10	12	15
2 Maximum Distance Between Cones or Tubular Markers for 1a	10	10	10	10	10
3 Minimum Tangent Distance Between Tapers	30	60	90	120	150
4 Distance Between Construction Signs	40	60	80	100	150

LEGENDS:

- SIGN STAND
- DELINEATORS
- TCP
- ARROWBOARD TRUCK
- POLE
- REMOVE POLE
- MANHOLE/SERVICE BOX
- NEW AERIAL CABLE
- NEW U/G CABLE

Scope:
- Place and remove telecom poles for Telus

Dates:
- March 07 – April 30, 2018

Hours:
- 8:30am – 5:00pm

Drawing #:
- 2646030

Notes:
- All traffic control devices and signs to comply with Latest MOTM Manual Work on Roadway



COMPANY: DIXON NETWORKS CORPORATION
CONTACT: JAESIK YOON
PHONE: 604-940-8817 EXT. 225

